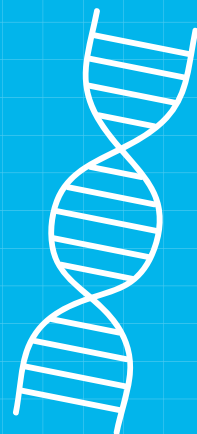
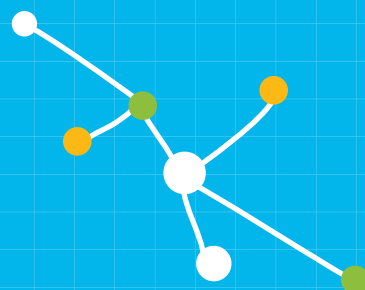
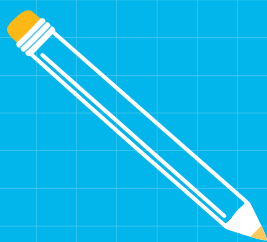
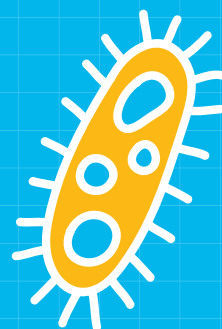
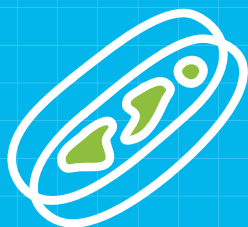
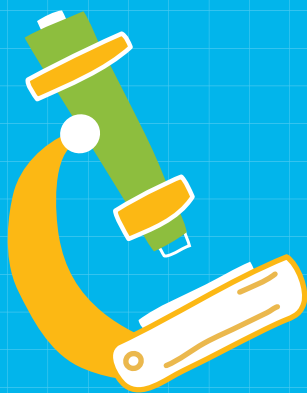


# FIELD TRIP GUIDE 2023-2024



## GET IN TOUCH

For more information or to book your field trip, please contact us at

 [reservations@thehealthmuseum.org](mailto:reservations@thehealthmuseum.org)  713-337-8451

## FOLLOW US ON SOCIAL

 @thehealthmuseum  /thehealthmuseum  @thehealthmuseum

# FIELD TRIP PACKAGE

STANDARD COST: \$8/STUDENT | ADD-ON ACTIVITIES AT ADDITIONAL COST

*Title I discount available at \$5/student*

## WHAT'S INCLUDED

## PAGE NO.



EST.  
TIME

ALL AGES

MUSEUM EXHIBITS

2

1 HR - 1.5 HR

4<sup>TH</sup> & UP

SPECIAL EXHIBIT

3

DRUGS: COSTS & CONSEQUENCES

## ADD-ON ACTIVITIES

ALL AGES

ORGAN DISSECTIONS

4

45-60 MINS

PK - 3<sup>RD</sup>

HEALTH ADVENTURE: EARLY CHILDHOOD

5

30 MINS

Health Adventure utilizes science, art, language, and math activities (STREAM) to stir up curiosity and learning in the young minds toward health and the human body.

4<sup>TH</sup> - 12<sup>TH</sup>

DISCOVERY LABS

6

45-60 MINS

Let your students explore health and science one step further. Through a fun, experiential learning approach, students are challenged to think creatively, collaborate, and problem-solve. These classes encourage curious minds of all ages to think in new and different ways about their own health.

2<sup>ND</sup> & UP

DEBAKEY CELL LAB

7

60 MINS

Gear up with a lab coat, gloves, and goggles and travel through experiment stations that get you up close and personal with cellular biology.

"OUR MISSION IS TO FOSTER CURIOSITY AND WONDER ABOUT HEALTH, MEDICAL SCIENCE, AND THE HUMAN BODY. THE HEALTH MUSEUM COMES TO LIFE EACH DAY AS WE WELCOME STUDENTS TO UNCOVER THE WORLD OF SCIENCE. ENCOURAGING EXCELLENCE IN SCIENCE, TECHNOLOGY, ENGINEERING, AND MATH EDUCATION (STEM) IS AT THE HEART OF WHAT WE DO, AND WE ARE EXCITED TO GROW, EXPLORE, AND LEARN WITH YOUR GROUP."

Eveline Amador

– Reservations Coordinator

# MUSEUM EXHIBITS

RESERVATIONS MUST BE MADE 20 DAYS IN ADVANCE, BOOK TODAY!

STANDARD COST  
\$8/STUDENT  
Title I discount available \$5

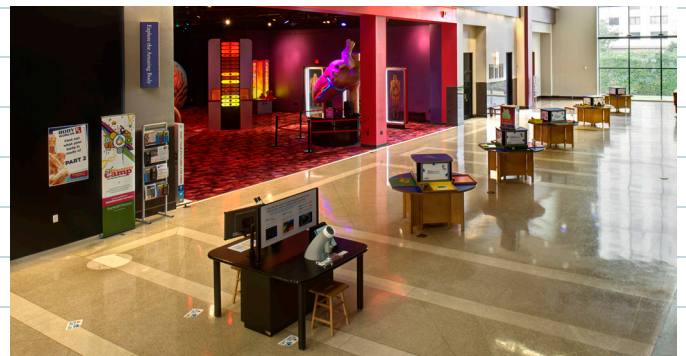


## AMAZING BODY GALLERY

Explore the science of health and the human body with interactive kiosks and larger-than-life models of human organs, including a giant beating heart! This exhibit is a great way for students to learn about body systems.

## BRAIN TEASERS

Time to flex some mental muscle! This guest-favorite features a collection of hands-on puzzles designed to develop problem-solving skills while providing plenty of fun. From mathematical conundrums to mind-boggling block puzzles - these puzzles challenge you to use some creative thinking and problem-solving strategies.



## VETERAN VISION PROJECT

Arizona State University student and photographer Devin Mitchell created the Veteran Vision Project to capture the diversity of veterans and their experiences. His powerful photos, which have received significant national acclaim, contrast veterans in uniform and in poses that reflect their life after military service.

## MCGOVERN THEATER

The Health Museum's McGovern Theatre – originally funded by the John P. McGovern Foundation – is a multi-purpose theatre that houses lectures, dissection demonstrations, science shows and films. Come take a seat and enjoy the view!



SUITABLE FOR ALL AGES

# SPECIAL EXHIBIT

TRIP RESERVATIONS MUST BE MADE 20 DAYS IN ADVANCE, BOOK TODAY!

INCLUDED IN  
FIELD TRIP  
ADMISSIONS

## Drugs: Costs & Consequences

Opening Eyes to the Damage Drugs Cause



RECOMMENDED FOR GRADES 4<sup>TH</sup> & UP

September 30, 2023 – June 2, 2024

Illegal drugs are an ever-present threat in American society. This exhibit from the Drug Enforcement Administration (DEA) Museum is designed to shed light on the science of drug addiction and the myriad costs of illegal drugs to individuals, American society, and the world and to provide context on how we can make a difference. Through artifacts, exhibits, historical details, science content, and video and interactive stations.



BUS VOUCHERS AVAILABLE FOR FIELD TRIPS WHO COME TO TOUR THE "DRUGS: COSTS & CONSEQUENCES" EXHIBIT. TAKE ADVANTAGE OF THIS OFFER WHILE IT LASTS!

### ELIGIBILITY & REQUIREMENTS

- ✓ Each bus needs to have a minimum of 30 students to be eligible for the voucher reimbursement (up to \$500).
- ✓ Schools are responsible for reserving their own field trip transportation.
- ✓ Once your trip date is confirmed, please request the invoice to be sent to The Health Museum for the cost of the bus.



# ORGAN DISSECTIONS FOR ALL AGES

ORGAN DISSECTION IS AN ADD-ON OPTION TO A FIELD TRIP RESERVATION, PLEASE BOOK AT LEAST 20 DAYS IN ADVANCE. OPTION CHOICE IS SUBJECT TO MUSEUM EDUCATOR'S AVAILABILITY.



ALL AGES

## LIVE DISSECTION DEMONSTRATIONS

Take a seat inside the McGovern theater and follow a live dissection of a cow eye or a sheep heart performed by one of the Museum science educators.

Each demonstration hosts up to 120 students.

45 MINS  
\$50/SESSION



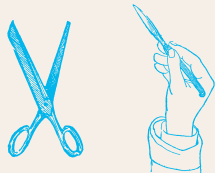
PK - 12<sup>TH</sup>

## DIY DISSECTION

Under the guidance of a science educator, students will learn about the structure and function of major organs, while getting an up-close look at some very unique animal adaptations.

45-60 MINS  
\$5-\$12/STUDENT

PICK AN ORGAN  
DO IT YOURSELF!



DIY OWL PELLET PK-3<sup>RD</sup> • (\$6/STUDENT)

DIY COW EYE DISSECTION • 3<sup>RD</sup>-12<sup>TH</sup> (\$8/STUDENT)

DIY SHEEP HEART • 6<sup>TH</sup>-12<sup>TH</sup> (\$12/STUDENT)

DIY SHEEP KIDNEY • 6<sup>TH</sup>-12<sup>TH</sup> (\$12/STUDENT)

# HEALTH ADVENTURE: EARLY CHILDHOOD

30-45 MINS  
\$3-\$5/STUDENT



HEALTH ADVENTURE IS AN ADD-ON OPTION TO A FIELD TRIP RESERVATION, PLEASE BOOK AT LEAST 20 DAYS IN ADVANCE. OPTION CHOICE IS SUBJECT TO MUSEUM EDUCATOR'S AVAILABILITY.

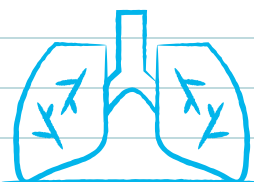
PK - 3<sup>RD</sup>

## HEALTHY HABITS

Healthy Habits is an engaging and interactive hands-on class designed to empower children with essential skills for lifelong well-being. Through creative arts and craft activities, students will learn how physical fitness and nutrition play a part in maintaining a healthy heart and body.

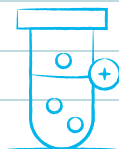
## BUSY BODIES

Go on a wild ride inside and out to discover the secrets of the amazing human anatomy, from your brain's brilliance to your heart's rhythmic dance, uncover the mysteries that keep your body bustling 24/7.



## SQUEAKY CLEAN

In this fun, interactive hands-on class designed exclusively for young learners, the focus is aimed at instilling the importance of good hygiene habits. Students will learn how to develop routines that promote good health and hygiene!



## THE POOP-TASTIC ADVENTURE

Get ready for some sassy science, and talk human poop, animal poop, and how we can keep our digestive systems healthy. Learn fun scientific facts while making poop slime!

*\*Labs and classes at The Health Museum align to the state and national standards in Science, Technology, Engineering, Art, and Math (STEAM) content.*

# DISCOVERY LABS

ADD-ON OPTIONS TO FIELD TRIP RESERVATION

60 MINS

\$8-CLINICAL CASE LAB

\$10-AMAZING BODY LAB



5<sup>TH</sup> - 12<sup>TH</sup>

## CLINICAL CASE LABS BRAIN AND THE SCIENCE OF ADDICTION

Did you know that chronic exposure to drugs reduces and desensitizes the brain's dopamine receptors, which feeds the craving for drugs? Take an in-depth exploration into the brain, neurotransmitters, and the science behind addiction. Students will have the opportunity to interact with the Synthetic Cadaver – a high-fidelity medical simulation model of a human body.

## MYSTERIES OF THE CARDIOVASCULAR AND RESPIRATORY SYSTEM

This unique program invites participants to dive deep into the intricacies of the cardiovascular and respiratory systems through a captivating case study. Students will also have the opportunity to interact with our Synthetic Cadaver, enhancing their hands-on learning experience.

## AMAZING BODY LABS CPR LAB

This class equips students with essential knowledge and skills in cardiopulmonary resuscitation skills (commonly known as CPR). Students will be taught a fundamental understanding of the human heart, basic cardiovascular information, and the ability to confidently perform chest compressions.

## SUTURING LAB

This lab offers a dynamic and practical experience in the art of wound closure. Students learn to handle various suturing instruments, understand different suture materials, and master suturing methods suitable for different wound types.

## SPLINTING LAB

Students delve into the art and science of splinting. Under the guidance of experienced science educators, students learn to assess injuries, understand the principles of immobilization, and create custom splints tailored to individual patient needs.

*\*Labs and classes at The Health Museum align to the state and national standards in Science, Technology, Engineering, Art, and Math (STEAM) content.*

# DEBAKEY CELL LAB

20-40 MINS  
\$5/STUDENT

LAB EXPERIMENTS ARE FACILITATED BY A LAB EDUCATOR, MUST BE BOOKED 20 DAYS IN ADVANCE

GEAR UP WITH A LAB COAT, GLOVES, AND GOGGLES. TRAVEL THROUGH EXPERIMENT STATIONS THAT GET YOU UP CLOSE AND PERSONAL WITH CELLULAR BIOLOGY.

Named after the respected and accomplished cardiovascular surgeon and medical pioneer, Dr. Michael E. DeBakey, this interactive bilingual lab experience is designed to make biology-based science experiments accessible to the public and inspire future scientists and science-lab leaders in the medical field.

*Experiments are available in English & Spanish.*



- ✓ FOR GRADES 2<sup>ND</sup> & UP DUE TO THE COMPLEXITY OF THE EXPERIMENTS
- ✓ ALL GROUPS MUST BE ACCOMPANIED BY AN ADULT CHAPERON
- ✓ 2 EXPERIMENTS PER VISIT



## 2<sup>ND</sup> & UP

### DNA EXTRACTION

See long, stringy DNA strands after breaking down cell membranes of a wheat germ.

15-20 min

### CHEEK CELLS

Stain and examine a small sample of your cheek cells under a microscope.

15-20 min

## 4<sup>TH</sup> & UP

### EXAMINING BLOOD

Make, stain, and look at a sheep blood smear through a microscope to appreciate different types of blood cells, RBCs, WBCs, and platelets (along with human blood smear samples available in the lab).

30 min

### ANTIMICROBIAL AGENTS

Determine which common antimicrobial products are the most effective in killing bacteria.

20-25 min

## 8<sup>TH</sup> & UP

### MYSTERY MICROBES

Identify living bacteria cultures using chemical tests, stains, and a microscope.

30-45 min

### GIANT CHROMOSOMES

Stain DNA, learn to examine the DNA in tightly packed chromosomes under a microscope.

40 min

*\*Labs and classes at The Health Museum align to the state and national standards in Science, Technology, Engineering, Art, and Math (STEAM) content.*